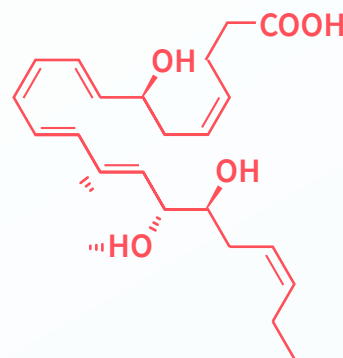




Lipid Mediators of Inflammation Targeted Panel



Lipid Mediators

Lipid mediators are a class of bioactive lipids produced locally through specific biosynthetic pathways in response to extracellular stimuli. Lipid mediators are involved in many cellular processes, and their dysregulation has been linked to various conditions, including inflammation, which can be symptoms of underlying disease. Lipid mediators of inflammation are critical in generating and resolving inflammation, and their signature provides relevant information on patients' inflammatory status and immune response.

Applications

- ▶ Inflammation
- ▶ Cardiovascular disease
- ▶ Neuroscience



LLOQ*

Metabolite	Plasma (ng/mL)	Metabolite	Plasma (ng/mL)
11,12-DiHETrE	0.617	Arachidonoyl ethanolamide (AEA)	2.49
12,13-EpOME†	26.7	Arachidonic acid (AA)†	500
12-HEPE	0.618	Docosahexaenoic acid (DHA)†	97.8
12-HETE	1.92	Docosahexaenoyl ethanolamide (DHEA)	1.76
12-HHTrE	49.2	Docosapentaenoic acid (DPA)†	98.9
13,14-dihydro-15-keto prostaglandin D2	6.13	Eicosapentaenoic acid (EPA)†	123
13,14-dihydro-15-keto prostaglandin F2α	3.13	Leukotriene B4	0.613
13,14-EpDPA†	6.25	Leukotriene C4†	4.86
13-HODE	5	Leukotriene D4	10
13-HOTrE	2.5	Leukotriene E4	1.55
15(R)-Lipoxin A4	0.245	Lipoxin A4	0.245
15-keto prostaglandin F2α	12.4	Lipoxin A5	0.297
16-HDHA	6.25	Lipoxin B4	6.2
17(R)-resolvin D3	5.96	Maresin 1	6.18
17,18-EpETE†	36.8	Maresin 2	1.22
17-HDHA	6.16	MCTR3/PCTR3	2.46
19,20-EpDPA†	17.4	PCTR1/MCTR1†	6.13
20-HETE	0.625	Prostaglandin D2	12.5
20-hydroxy prostaglandin F2α	6.13	Prostaglandin E2	6.25
5(S),6(R)-DiHETE	0.313	Prostaglandin J2	0.959
5,6-DiHETrE†	435	Protectin D1	2.48
5,6-EET†	125	Protectin DX	0.613
5-HEPE	1.25	Resolvin D1	0.311
5-HETE†	3.42	Resolvin D2	6.25
8,9-EET†	25	Resolvin D4	0.308
9,10-DiHOME	12.5	Resolvin D5	2.46
9-HETE	3.68	Resolvin E1	2.39
9-HODE	4.92	Resolvin E2	12.5
9-HOTrE	2.49	Thromboxane B2	3.13

*Lower Limit of Quantitation (LLOQ) varies for each sample type.

†Note that these analytes did not meet the full validation criteria but do meet validation criteria sufficiently to support biological insights derived from their measurements.

This panel is for Research Use Only and is not to be used for diagnostic purposes.

Analysis Method and Instrumentation

LC-MS/MS (Agilent 1290 UHPLC/Sciex QTrap 7500)

Sample Type and Required Amounts

Sample Type	Sample Requirement
Plasma	150 to 200 µL

Others on request.

Contact us to get started
metabolon.com

+1 (919) 572-1711
617 Davis Drive, Suite 100, Morrisville, NC, 27560
© 2022 Metabolon, Inc. All rights reserved.